

LAB  
CATALOGUE

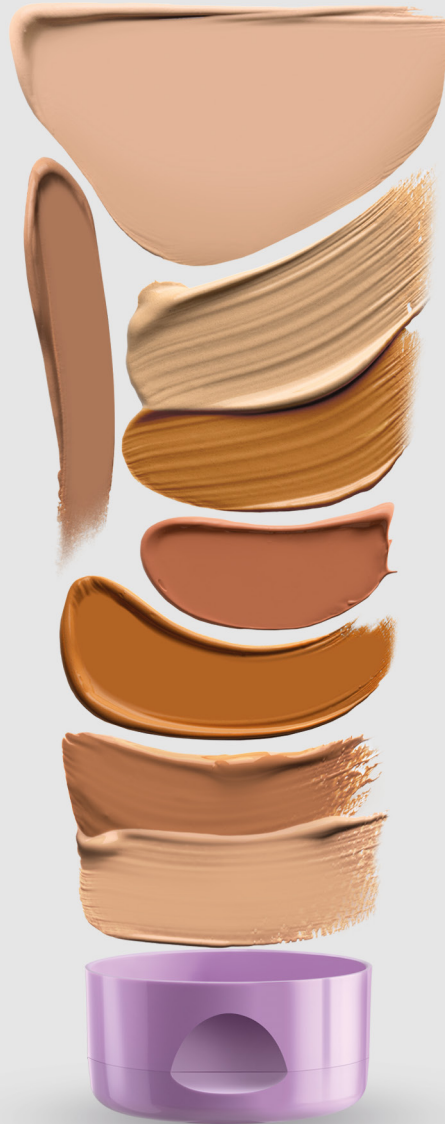


**Let's fill  
our world  
with beauty**



**MARCHESINI  
GROUP**  
BEAUTY

LET'S FILL OUR WORLD  
WITH BEAUTY



**We produce machines and lines for the processing and packaging of cosmetic products.**

We are committed to responding promptly to every type of request - from laboratories and small businesses to extensive companies - in order to fulfill our common purpose: filling the world with beauty.



**MARCHESINI  
GROUP**  
BEAUTY

# Lab vacuum turboemulsifiers

## AXOMIX LAB SERIES

Featured Model **AXOMIX 10**

Turboemulsifiers especially designed to produce stable emulsions, creams, milk, gels, balms, lotions, and toothpastes all with extremely small particles for laboratories and small-scale productions.

- Optimum mixing system for raw materials.
- Special geometry of the turbine and its high rotation speed (3000 rpm).
- Special sealing gaskets guarantee the impossibility to have air in the product.
- Perfect temperature control.
- Vacuum efficacy.
- Easy cleaning.
- Fast homogeniser (adj speed up to 3000 rpm).
- Adjustable speed of the Slow mixing, by inverter.
- Hydraulic lifting of the cover.
- Manual hand wheel for vessel tilting.
- Small hopper for additive, perfumes.
- Observation window with screen and lamp.
- Removable spout on the vessel for product conveying when tilting.
- Control panel with multi-coloured touch screen of 10", suitable for Industry 4.0.
- Possibility to record recipes.
- All parts coming into product contact are realized in stainless steel AISI 316L mirror polished.
- Ethernet connection for remote assistance.
- Optional available on request: CIP system, data printing, steam heating, etc..
- Full Atex certification (option).



### RANGE

3 - 50 litres with  
intermediate capacities



## Filling machine e-Filly SERIES

### FILLING RANGE

- 2 - 2500 ml - pneumatic version also available.
- Wi-fi remote control with a dedicated APP.



## Volumetric filling machine JOLLY SERIES

### FILLING RANGE

- 10 - 1100 ml with all the intermediate capacities.
- High dosage accuracy.



## Metal tube crimping machine AXO 10

### FEATURES

- Manual machine without electricity or compressed air.
- Max. tube diameter: 42 mm.



## Plastic tube sealer AXO 20

### FEATURES

- Codes 4 tubes simultaneously for production cycle
- Max. diameter: 50 mm (coding option).



## Tube sealing machine AXO 30

### FEATURES

- Hot air sealing device for plastic and laminated tubes.
- Max. tube diameter: 50 mm coding and trimming station.



## Laboratory equipment TAP TAP TEST

### FEATURES

- Suitable to check the fitting of the stick in the packaging.
- Equipped with a disk for one size of packaging.



## Manual demoulding unit for lipsticks DEMOULDING UNIT

### FEATURES

- Laboratory equipment suitable to the production of lipstick samples.



## Melting tank 1 liter with stirrer and gear doser MELTING TANK

### FEATURES

- Labo unit for filling cosmetic products up to 130°C.
- Minimum dosing 0,2 ml and maximum dosing unlimited.
- The dosage is constan, accuracy +/- 0,5%.
- One filling nozzle with manual adjustable height.
- The level is kept constant through a bin fed by a pump.
- Manufacturing in Anticorodal material.
- Full electric operation (not pneumatic).



**Marchesini Group Beauty**

Via Garganelli, 24 • 40065 Pianoro Bo  
ITALY

T +39 051 047 9111  
sales.beauty@marchesini.com  
**beauty.marchesini.com**



**MARCHESINI GROUP BEAUTY**  
LET'S FILL OUR WORLD WITH BEAUTY